

Confined Space Inventory for Saint Cloud Public Schools



Inspector: Rachel Koehler

Inspection Date: 12/20/2006

Building: *Discovery Elementary*

Location: *Exterior Building West Courtyard*

Type of Space: *Storm sewer*

Space Classification: *Permit*

Potential Hazards:

Potential for oxygen deficiency

Engulfment

Configuration

Number of Entries into Space: *1*

Other Considerations:

City sewer or water

Fall hazards

Poor lighting

Slick/wet surfaces

Comments: *None*

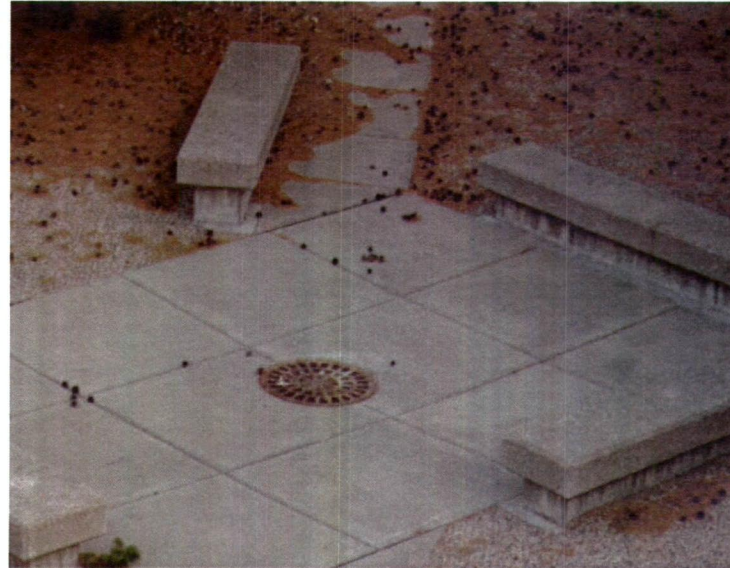


Photo Date: 12/20/2006

Photo Description

Storm Sewer

Confined Space Inventory for Saint Cloud Public Schools



Inspector: Rachel Koehler

Inspection Date: 12/20/2006

Building: *Discovery Elementary*

Location: *Boiler Room Penthouse*

Type of Space: *Boiler stack*

Space Classification: *Permit*

Potential Hazards:

Potential for oxygen deficiency

Engulfment

Configuration

Number of Entries into Space: *1*

Other Considerations:

Falling objects

Poor lighting

Temperature extremes

Comments: *Lockout/Tagout procedures for boilers are required prior to entry.*



Photo Date: 12/20/2006

Photo Description

Boiler Stack

Confined Space Inventory for Saint Cloud Public Schools



Inspector: Rachel Koehler

Inspection Date: 12/20/2006

Building: *Discovery Elementary*

Location: *Boiler Room*

Type of Space: *Boiler #1*

Space Classification: *Non-Permit*

Potential Hazards:

No Hazards

Number of Entries into Space: *1*

Other Considerations:

Electrical

Gas lines

Temperature extremes

Comments: *Lockout/Tagout procedures for boiler are required prior to entry.*



Photo Date: 12/20/2006

Photo Description

Boiler #1

Confined Space Inventory for Saint Cloud Public Schools



Inspector: Rachel Koehler

Inspection Date: 12/20/2006

Building: *Discovery Elementary*

Location: *Boiler Room*

Type of Space: *Boiler #2*

Space Classification: *Non-Permit*

Potential Hazards:

No Hazards

Number of Entries into Space: *1*

Other Considerations:

Electrical

Gas lines

Temperature extremes

Comments: *Lockout/Tagout procedures for boiler are required prior to entry.*



Photo Date: 12/20/2006

Photo Description

Boiler #2

Confined Space Inventory for Saint Cloud Public Schools



Inspector: Rachel Koehler

Inspection Date: 12/20/2006

Building: *Discovery Elementary*

Location: *Exterior Building North side*

Type of Space: *Storm sewer (2)*

Space Classification: *Permit*

Potential Hazards:

Potential for oxygen deficiency

Engulfment

Configuration

Number of Entries into Space: *1*

Other Considerations:

City sewer or water

Fall hazards

Poor lighting

Slick/wet surfaces

Comments: *None*



Photo Date: 12/20/2006

Photo Description

Storm Sewer

Confined Space Inventory for Saint Cloud Public Schools



Inspector: Rachel Koehler

Inspection Date: 12/20/2006

Building: *Discovery Elementary*

Location: *Exterior Building West side*

Type of Space: *Storm sewer (2)*

Space Classification: *Permit*

Potential Hazards:

Potential for oxygen deficiency

Engulfment

Configuration

Number of Entries into Space: *1*

Other Considerations:

City sewer or water

Fall hazards

Poor lighting

Slick/wet surfaces

Comments: *None*



Photo Date: 12/20/2006

Photo Description

Storm Sewer

Confined Space Inventory for Saint Cloud Public Schools



Inspector: Rachel Koehler

Inspection Date: 12/20/2006

Building: *Discovery Elementary*
Location: *Exterior Building South side*
Type of Space: *Storm sewer (2)*
Space Classification: *Permit*
Potential Hazards:
Potential for oxygen deficiency
Engulfment
Configuration
Number of Entries into Space: *1*
Other Considerations:
City sewer or water
Fall hazards
Poor lighting
Slick/wet surfaces
Comments: *None*



Photo Date: 12/20/2006

Photo Description
Storm Sewer

Confined Space Inventory for Saint Cloud Public Schools



Inspector: Rachel Koehler

Inspection Date: 12/20/2006

Building: *Discovery Elementary*

Location: *Exterior Building East side*

Type of Space: *Storm sewer*

Space Classification: *Permit*

Potential Hazards:

Potential for oxygen deficiency

Engulfment

Configuration

Number of Entries into Space: *1*

Other Considerations:

City sewer or water

Fall hazards

Poor lighting

Slick/wet surfaces

Comments: *None*



Photo Date: 12/20/2006

Photo Description

Storm Sewer

Confined Space Inventory for Saint Cloud Public Schools



Inspector: Rachel Koehler

Inspection Date: 12/20/2006

Building: *Discovery Elementary*

Location: *Exterior Building North side*

Type of Space: *Storm sewer*

Space Classification: *Permit*

Potential Hazards:

Potential for oxygen deficiency

Engulfment

Configuration

Number of Entries into Space: *1*

Other Considerations:

City sewer or water

Fall hazards

Poor lighting

Slick/wet surfaces

Comments: *None*

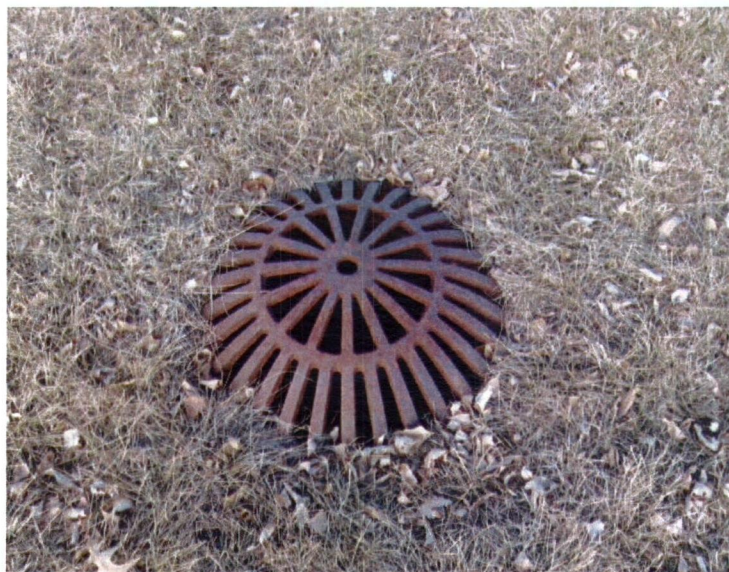


Photo Date: 12/20/2006

Photo Description

Storm Sewer